



ABSENTEE VOTING



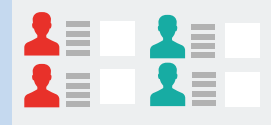
WHAT YOU NEED TO KNOW

APPLY FOR BALLOT



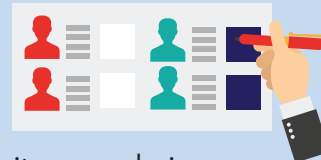
- Voters must submit an absentee ballot application
- Sign your application & indicate which election(s) you're requesting a ballot for
- Submit the application in person, by mail, email, or fax to your local clerk
- Your local clerk will verify your signature

RECEIVE BALLOT



- You can have your ballot mailed to you
- You can pick up your ballot in person at your local clerk's office

VOTE YOUR BALLOT



- Completely darken the box opposite your choice
- Mark your ballot using only black or blue ink
- Do not "split your ticket" in the August Primary; vote in one party section only
- Check both sides of the ballot
- Place the ballot in the secrecy sleeve so the numbered stub is visible
- **Sign your return envelope**

RETURN YOUR BALLOT



- Return your ballot by mail or drop off at your local clerk's office
- Your local clerk will verify your signature matches your signature on file
- Absentee ballots must be returned to your local clerk by 8 p.m. on Election Day to be counted

TRACK YOUR BALLOT



- You can track the status of your Absentee ballot at:
<https://mvic.sos.state.mi.us/>